



## 2014 INTERNATIONAL 420 CLASS SOUTH AMERICAN CHAMPIONSHIP

Veleiros do Sul Associação Náutica Desportiva  
Porto Alegre, RS - Brazil  
17th – 22nd December 2014

### **NOTICE OF RACE**

#### **Organising Authority:**

Veleiros do Sul Associação Náutica Desportiva  
In conjunction with:

Brazilian 420 Class Association and the International 420 Class Association

#### **1. RULES**

- 1.1. The regatta will be governed by the Rules as defined in the Racing Rules of Sailing (RRS)
- 1.2. No Class Rules change will apply.
- 1.3. No National Authority prescriptions will apply.
- 1.4. If there is a conflict between languages the English text will take precedence.

#### **2. ADVERTISING AND BOW NUMBER**

- 2.1. Boat may be required to display bow numbers and /or advertising chosen and supplied by the Organising Authority.

#### **3. EVENTS FORMAT**

- 3.1. The championship will be competed in one separated fleet (single series) with **10 final races**.

#### **4. ELIGIBILITY**

- 4.1. The championships are only open to International **420** dinghies.
- 4.2. Each competitor shall be a member of his National Class Association and, if relevant, of his National Authority.

#### **5. ENTRIES AND RESTRICTIONS**

- 5.1. All men, ladies or mixed crews are authorised to enter the South American Championship.



**6. REGISTRATION**

- 6.1. All entries shall be made by completing the entry forms on Attached 1 or the web site [www.vds.com.br](http://www.vds.com.br) no later than November 20th and completing registration and payment of all fees. **The entry form (Appendix 1) shall be sent to [esportiva@vds.com.br](mailto:esportiva@vds.com.br).**
- 6.2. Please ensure that the entry form is printed, the required signatures obtained and the form brought to registration.
- 6.3. Entry fee per boat: **USD 100,00.**
- 6.4. Entry fees shall be paid in Dolares or Reais direct to the Organizing Authority at registration.
- 6.5. Each entry not received by the 20th November 2014 may not be accepted and shall be subject to a supplementary fee of USD 50,00.

**7. EVENTS SCHEDULE**

Day	Time	Activity
Day 1 - 17th December	0900-1800	Registration and equipment inspections
Day 2 - 18th December	0900-1200 1500 1800	Registration and equipment inspections Practice Race: warning signal Opening Ceremony
Day 3 - 19th December	1400	Races
Day 4 - 20th December	1400	Races
Day 5 - 21th December	1400	Races
Day 6 - 22th December	1300 2030	Races Closing Ceremony

- 7.1. No more than three races can be competed each day.
- 7.2. No warning signal will be given on the last day after 16:00

**8. EQUIPMENT INSPECTION – CERTIFICATES**

- 8.1. All boats shall be inspected before racing in the days specified in this Notice of Race. A boat will be eligible to compete and complete event registration after Equipment Inspection has been completed.
- 8.2. Each boat shall have a valid Measurement certificate, accompanied by the hull measurement form (IMF), both of which must be presented during the pre-race inspection. Only original or certified true copies of these documents shall be accepted. Event charter boats are excluded from this obligation, but they must be accompanied by original or certified true copies of their measurement form.
- 8.3. Sails shall be certified and marked by an official measurer before being present for inspection. No sail shall be accepted for inspection if it is not certified according to the class rules.
- 8.4. Random checks may be made at any time during the championships



**9. SAILING INSTRUCTIONS and EQUIPMENT INSPECTION INSTRUCTIONS**

9.1. The Sailing instructions will be available at the race office for each competitor after the final registration has been completed. The Equipment Inspection Instructions will be available for each competitor at the race office at registration.

**10. VENUE**

10.1. The Championship will be held in the city of Porto Alegre, in the state of Rio Grande do Sul. The shore venue will be the club Veleiros do Sul.

10.2. Club Address: Av. Guaíba, 2941, Bairro Vila Assunção, Porto Alegre, RS Brasil  
CEP 91900-420 - Phone/fax numbers: +55 51 3265.1733/ +55 51 3265.1717

10.3. The racing areas will be on Baía do Cristal at the Guaíba River. See attached 2.

**11. COURSES**

11.1. The courses will be **trapezoid**.

11.2. The target time of a race will be 45 minutes.

**12. PENALTY SYSTEM**

12.1. RRS Appendix P, Special Procedures for Rule 42, will apply.

**13. JURY, PROTESTS and PENALTIES FOR BREAKING RULES OF PART 2**

13.1. An International Jury will be appointed in accordance to RRS 91(b), its decisions will be final as provided in RRS 70.5.

**14. SCORING**

14.1. RRS appendix A will apply.

14.2. 5 races must be completed to constitute the series.

14.3. There will be 10 final races in the single series.

14.4. Discards

- When fewer than 5 races have been completed, a boat's series score is the total of her race scores.
- When 5 or more races have been completed, a boat's series score is the total of her race scores excluding her worst score.

**15. COACH BOAT AND SUPPORT PERSONAL**

15.1. All coach and persons in support boats shall be registered on the race office and shall be identified with numbered vests at all times while on the water.

15.2. All registered support boats shall act as rescue boats in case of need (more details in Sailing Instructions).

**16. SAFETY REGULATIONS**

- 16.1. Competitors shall wear a life-jacket or other adequate personal buoyancy at all time when afloat (See Class rule **C.3**).
- 16.2. Wet suits and dry suits do not constitute adequate personal buoyancy.

**17. PRIZES**

- 17.1. The first five crews in the general fleet shall be given a trophy.
- 17.2. The first three Ladies crews in the general fleet shall receive a trophy.
- 17.3. The first three Junior crew shall receive a trophy.
- 17.4. The prizes are given to both members of a crew.

**18. TITLES**

- 18.1. The title of International 420 Class South American Champion will be awarded to the first team in the ranking list of the South American Championship.
- 18.2. The title of International 420 Class Ladies South American Champion will be awarded to the first Ladies team in the ranking list of the South American Championship.
- 18.3. The title of International 420 Class Junior South American Champion will be awarded to the first junior team in the ranking list of the South American Championship.
- 18.4. A junior team is defined as a crew with his or her 19th birthday on or before 31.12.2014 (i.e. born after 31st December 1995) for both members of the crew.

**19. RIGHTS TO USE NAMES & LIKENESSES**

- 19.1. By participating in the regatta competitors automatically grant to the International 420 Class Association and to the organizing authority and their sponsors, the right in perpetuity to make, use and show, from time to time at their discretion, any motion pictures and live, taped or filmed television and other reproductions of the athlete during the period of the competition without compensation.

**20. CAMERAS AND ELECTRONIC EQUIPMENT**

- 20.1. Stand by.

**21. DISCLAIMER OF LIABILITY**

- 21.1. Competitors participate in the regatta entirely at their own risk. See RRS 4, Decision to Race. The Organizing Authority and all parties involved in the regatta organization will not accept any liability for material damage or personal injury or death sustained in conjunction with or prior to, during, or after the regatta.

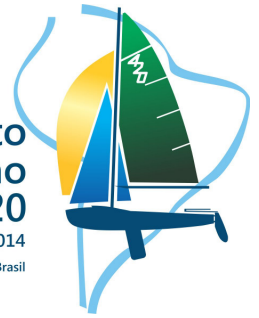
Veleiros do Sul



Campeonato  
Sul Americano  
da Classe 420

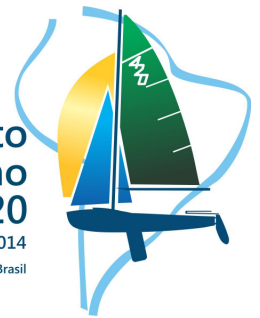
17 a 22 de Dez. 2014

Veleiros do Sul - Porto Alegre - Brasil



**22. INSURANCE**

- 22.1. The Organising Authority recommends that each competitor has an evidence of valid third party insurance with a minimum cover of U\$ 500.000,00 or the equivalent in other currencies.
- 22.2. Each participant warrants the suitability of his or her boat for the event.



**Appendix 1 - REGISTRATION FORM**

<b>Sail number:</b>		<b>Boat Name:</b>	
<b>Club:</b>		<input type="checkbox"/> General Crew Senior <input type="checkbox"/> Júnior Crew <input type="checkbox"/> Ladies Crew	
<b>Skipper:</b>		Weight:	
Gender: <input type="checkbox"/> Male <input type="checkbox"/> Female		Date of Birth:	
Telephone:	E-mail:	Age:	
Adress:		City:	
Country:		ID ISAF Sailor:	
<b>Bowman:</b>		Weight:	
Gender: <input type="checkbox"/> Male <input type="checkbox"/> Female		Date of Birth:	
Telephone:	E-mail:	Age:	
Adress:		City:	
Country:		ID ISAF Sailor:	

If you have a coach at this event, please complete bellow:

<b>Coach or Support Person:</b>		Country:
Telephone:	E-mail:	Age:
Adress:		City:

**DECLARATION**

I declare that I will compete under my own responsibility and risk, being aware that the competition may become hazardous. Hence, the organization authority, individuals and others involved on the event's organization will not be consider responsible for any damage, lost or personal accident that may occurs with my crew or boat, both on shore or on the water, as the result of my participation on this event.

\_\_\_\_/\_\_\_\_/\_\_\_\_

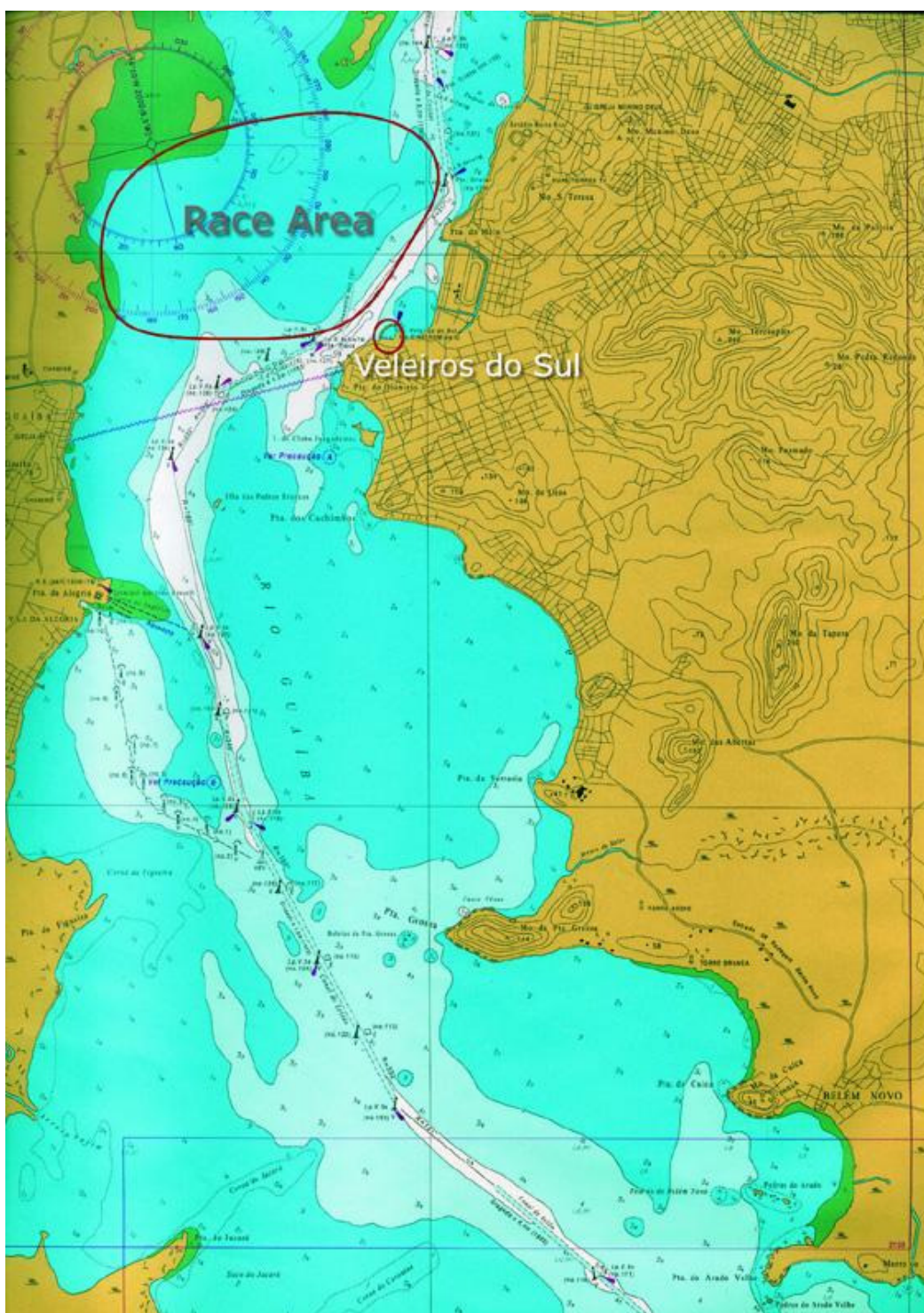
\_\_\_\_\_

**Date**

**Signature of skipper**



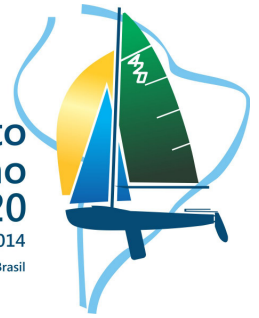
## Appendix 2 Race Area





## Campeonato Sul Americano da Classe 420

17 a 22 de Dez. 2014  
Veleiros do Sul - Porto Alegre - Brasil



### GENERAL INFORMATION(not part of the NoR)

#### 1. Weather information :

Expected weather conditions in December.

- 1.1 **Wind:** from 6 up to 8 knots with thermal North; from 10 up to 25 knots and over, from directions South Southeast East Wind
- 1.2 **Air temperature:** from 15 up to 30 degrees
- 1.3 **Water temperature:** around 17/18 degrees
- 1.4 **Tidal conditions or currents:** No tide, current N-S average 0,3 kts.  
Any unusual weather conditions that could arise during the event: thunder storm with strong wind for around 30 minutes, around 35/40 knots).

#### 2. Airport, area code and voltage information :

- 2.1 Area Code: (51)
- 2.2 Time Zone: (GMT -03:00) Brasilia
- 2.3 Voltage: 110 Volts and 220 volts
- 2.4 Salgado Filho Internacional Airport - 20Km to the Club.

#### 3. Accomodations in Porto Alegre:

##### 3.1. Veleiros do Sul accomodations

There will be 50 places in mariner collective accommodation, at Veleiros do Sul.  
US\$ 20.00 per sailor/day. Reserves requests must be made by 20/10/2014.

##### 3.2 House Sergio Steiner e Lílian Steiner House- 2 Km from Club) – House to 6 people

Rua Dr. Armando Barbedo, 54 – Bairro Tristeza

Phone: +55 51 3222.5184 com Lilian +55 51 9959. 9521 ou Sérgio Steiner +55 51 9639.3231 sergio.steiner54@gmail.com

##### 3.3. MILLENIUM FLAT BLUE TREE HOTELS –6km from Club

Av. Borges de Medeiros, 3120 – Bairro Praia de Belas

phones: (+55 51) 3026.2200 Email vendas@bluetree.com.br

Home: www.bluetree.com.br

##### 3.4 Everest Porto Alegre Hotel – 9km from Club

Rua Duque de Caxias, 1357 - Centro

Porto Alegre - RS, 90010-283

(51) 3215-9500- 51 4062 0995

##### 3.5. A complete listing of hotels and information about Porto Alegre are on the sites:

- Escritório Municipal de Turismo [www.portoalegre.rs.gov.br/turismo](http://www.portoalegre.rs.gov.br/turismo)

- Convention & Visitors Bureau Porto Alegre [www.visiteportoalegre.com](http://www.visiteportoalegre.com)

further information please visit <http://www.vds.com.br> or [Esportiva@vds.com.br](mailto:Esportiva@vds.com.br)





Campeonato  
Sul Americano  
da Classe 420  
17 a 22 de Dez. 2014  
Veleiros do Sul - Porto Alegre - Brasil



## Social Activities :

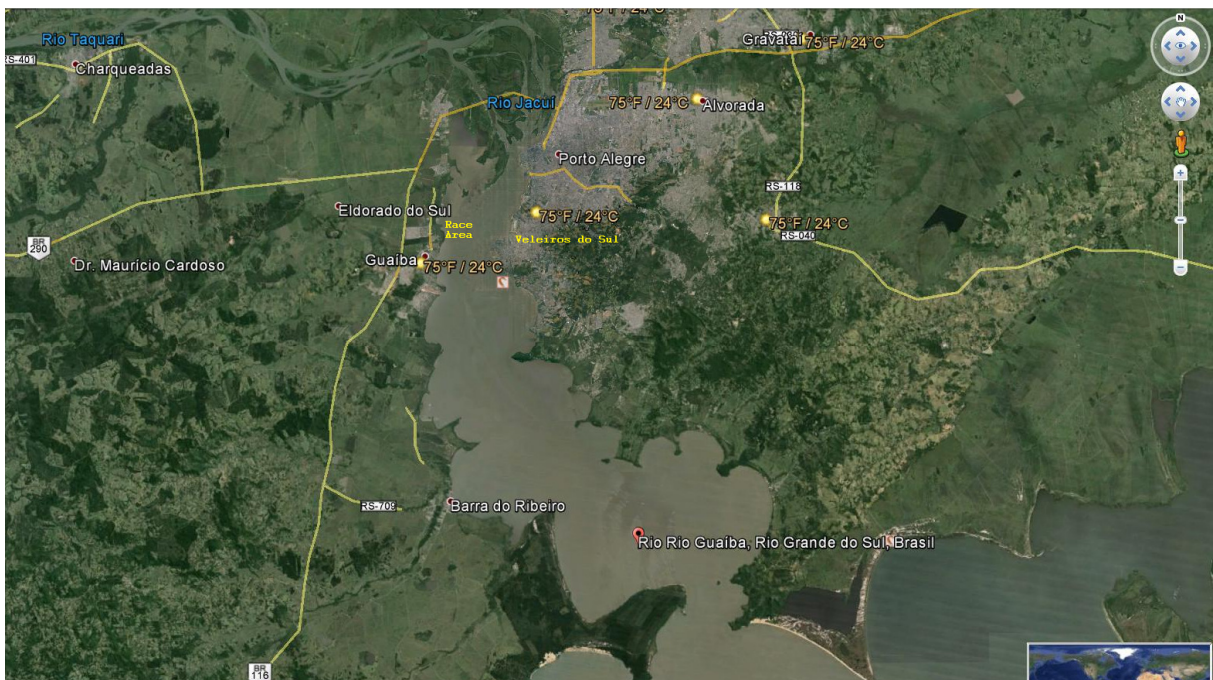
Day	Time	Activity
Day 1 - 17th December		Reception
Day 2 - 18th December	1800 1900	Opening Ceremony Opening Party
Day 3 - 19th December	1900	confraternization
Day 4 - 20th December	1900	confraternization
Day 5 - 21th December	1900	confraternization
Day 6 - 22th December	2030	Closing Ceremony <u>Dress Code:</u> <u>Male:</u> Polo shirts or shirts, Pants or short pants, tennis or shoes. <u>Female:</u> Dress, Polo shirts or shirts, skirt, pants or short pants, tennis or shoes.



## GUAIBA RIVER

The Guaíba River has 470Km<sup>2</sup> of surface, it has a medium depth of 2 meters and it is located 4 meters above the sea level. In the form of an elbow about 50 Km long, it extends, to the north, from the Delta of Jacuí (formed by the rivers Jacuí, Caí, Sinos and Gravataí), to the Ponta de Itapuã in the mouth of the Lagoa dos Patos, to the South. With margins shaped by points and bays, the Guaíba River has a minimum width of 900 meters in the downtown area, near the former Gasometro Power plant (a museum, today), and a maximum width of 19 Km to the South, between the bays of the Faxina Beach and the Itapuã Beach. While the east margin, where Porto Alegre is located, has granite hills, sand beaches form the west margin. The variations in the water level of Guaíba River depend on the fluctuations of the water level in the Lagoa dos Patos, on the direction and intensity of the predominant winds and on the intensity of the rains at the heads of the rivers that form the Delta of Jacuí.

The usual and stronger current in the Guaíba River is from North to South, varying from 0 to 1 Knots, exceptionally reaching to 2 Knots. The waters may also run from South to North, however the intensity will always be weak in this case. The short and relatively high waves are very rough with fresh winds. The wavelength is 2-3m, occasionally 4m but only in very strong winds. The height of the waves is usually 0.5-1m but in strong wind it may reach 1.5m and white capped. The nautical chart recommended for use in the Guaíba River are the nº. 2111 from Itapuã to Porto Alegre and the nº. 2109 from Ponta Grossa to Porto Alegre.





Campeonato  
Sul Americano  
da Classe 420  
17 a 22 de Dez. 2014  
Veleiros do Sul - Porto Alegre - Brasil



THE CLUB VELEIROS DO SUL <http://www.vds.com.br>

